



# PHILAE

Conventional fire detection

4 to 28 zones

## PRESENTATION



- ▶ **PHILAE** is a conventional fire detection system with 4 to 28 zones.
- ▶ Its total capacity is 512 detectors or manual call points.
- ▶ **PHILAE** consists of a basic panel to which up to 3 PHILAE\_EM extension modules can be connected, each with 8 zones. This gives a maximum capacity of 28 zones.
- ▶ You can connect up to 32 devices per zone (manual call points, optical smoke, heat, flame detectors in standard version or intrinsically safe).
- ▶ It is also possible to have up to 3 repeater with log events PHILAE\_RP (e.g. Engine Control Room , Fire Control Room, etc ...).
- ▶ **Simple, modular, quick and intuitive installation and operation.**

## FUNCTIONAL CHARACTERISTICS

### Display

- ▶ The status of the zones is indicated by yellow and red LEDs.
- ▶ Bilingual text: English + French, other languages on request.
- ▶ Integrated buzzer.
- ▶ Identification of the zones by customizable labels.

### Input

- ▶ 1 separate general alarm input, with a sequence of 7 short blasts / 1 long blast on the «siren» output.

### Functions

- ▶ Configuration using microswitches.
- ▶ Access code for protected functions.
- ▶ Zone monitoring (short circuit, open circuit, no detector).
- ▶ Automatic switchover from main to emergency power supply with alarm.
- ▶ repeater with log events.

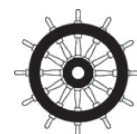
### Outputs

Digital outputs:

- ▶ « SIREN » , monitored, 24VDC of 0.5 A max.
- ▶ « FIRE » , dry contact, N.O., 1A.
- ▶ « FAULT » , dry contact, N.C., 1A.
- ▶ « FIRE NOT ACKNOWLEDGED 2 MIN », dry contact, N.O., 1A.

Communication:

- ▶ Output NET1 : VDR according to standard IEC-61162-2, NMEA 0183 (ASCII, 4800 bauds 8/N/1).
- ▶ Output NET2 : Modbus RTU RS485 SLAVE to external equipment, (9600 bauds 8/N/1).  
Dedicated port if use of repeater.



APPROVALS

▶ M.E.D





## MECHANICAL CHARACTERISTICS



### Dimensions (LxH)

- ▶ PHILAE: 178x176 mm
- ▶ PHILAE\_EM: 178x176mm
- ▶ PHILAE\_RP: 147x107 mm

- ▶ Housing: 138 x 130 mm

### Weight

- ▶ PHILAE: 0.6 Kg
- ▶ PHILAE\_EM: 0.6 Kg
- ▶ PHILAE\_RP: 0.4 Kg

### Mounting

- ▶ with screws from the front of the console.

## ELECTRICAL CHARACTERISTICS

### Power supply switching

- ▶ Automatic.

### Main power supply

- ▶ 24Vdc (+30%,-25%).

### Zones

- ▶ Shielded twisted pair cable with a minimum cross-section of 0.75mm<sup>2</sup>.
- ▶ Cable length max. per zone : 200 m.
- ▶ 120 mA max. per zone.
- ▶ Protection of each zone by resettable fuse.

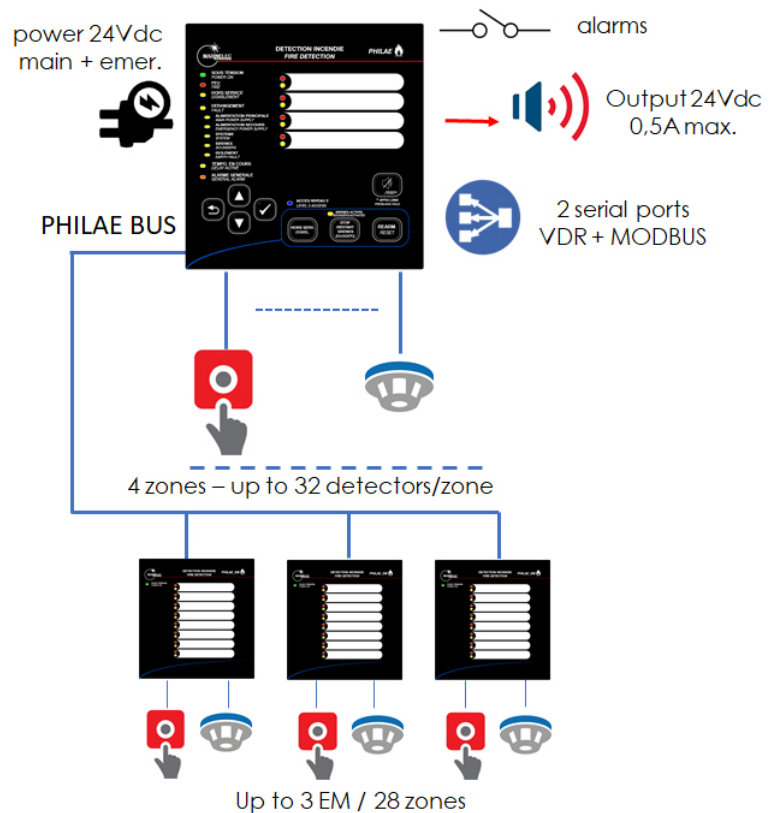
### Emergency power supply

- ▶ 24Vdc (+30%,-25%).

### Consumption

- ▶ PHILAE : 1,25 A max. at 24VDC.
- ▶ PHILAE\_EM : 1,5A max. at 24VDC.
- ▶ 5,75 A max. for the complete system at 24VDC.
- ▶ PHILAE\_RP: 0.25 A

## CONNECTION OVERVIEW



## ENVIRONMENTAL CONDITIONS



### Temperature limits

- ▶ -15°C à 70°C (storage)
- ▶ +5°C à 55°C (functioning)



### Humidity

- ▶ 95% RH - non condensable at 55°C



### Protection rating

- ▶ IP32 (front panel)

## REFERENCES & OPTIONS

- ▶ PHILAE: Fire detection panel 4 zones
- ▶ PHILAE\_EM: 8 zones extension module
- ▶ PHILAE\_RP: Repeater on 4" screen



Tel. + 33 (0)2 98 52 16 44 - Fax : + 33 (0)2 98 64 74 05 - [marinelec@marinelec.com](mailto:marinelec@marinelec.com) - [www.marinelec.com](http://www.marinelec.com)

sail safely

