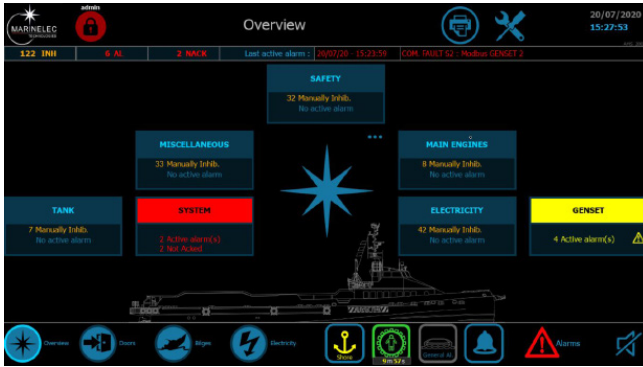




# M.TASK

Alarm and monitoring system

## PRESENTATION



M.TASK is the powerful Marinelec Integrated Alarm, Control & Monitoring System.

Our solution has been developed to meet the shipowners new challenges:

- ▶ Scalable modular system
- ▶ Reliable & secure access
- ▶ Modern & intuitive interface
- ▶ Analysis assistance
- ▶ Customizable (functions, mimic, language)

## FUNCTIONAL CHARACTERISTICS

### Main functions

- ▶ Alarm monitoring (bilge, doors, engine, etc...)
- ▶ Tank level measurement
- ▶ Remote control (lighting, pumps, valves, fans, etc...)
- ▶ Engine watch alarm management
- ▶ Duty officer alarm management

### Marinelec tools

- ▶ Curves
- ▶ Hour counters
- ▶ Alarm & page printing
- ▶ Data selection for VDR
- ▶ Remote alarm transmitter (sms/ email)

### I/O interface

- ▶ Digital inputs & outputs
- ▶ Analog inputs (0/10V, +/-10V, 0/20mA, 4/20mA, PT100/1000, thermocouple)
- ▶ Analog outputs (0/10V, +/-10V, 0/20mA, 4/20mA)

### Marinelec integrated functions

- ▶ Navigation light control
- ▶ Fire detection monitoring
- ▶ Emergency order telegraph

### Shore connectivity

- ▶ Web viewer
- ▶ Secure remote support
- ▶ Data shore analysis «Ecomer TC»

### Gateways

A large range of industrial communication protocols to interface with embedded systems:

- ▶ Navigation network over NMEA0183 or NMEA2000
- ▶ Engines over J1939
- ▶ Power management system over Modbus RTU or Modbus TCP
- ▶ Battery management system over CANopen
- ▶ ETC...

### Advanced functions

- ▶ Analytic Econometer «Ecomer»
- ▶ Conning
- ▶ Battery management system
- ▶ Power management system
- ▶ Video management

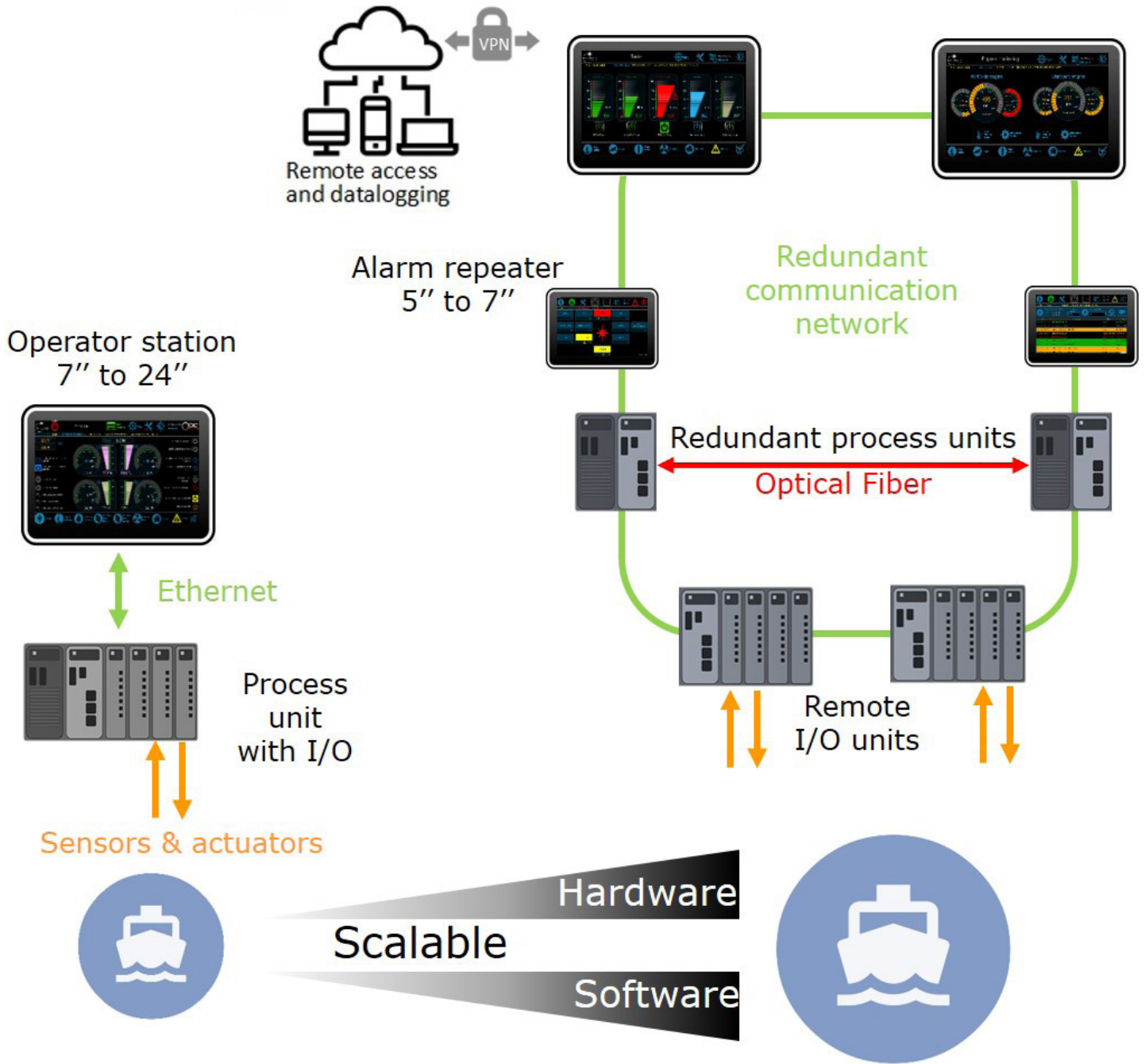
## APPROVALS

- ▶ Meets all maritime standards





## DESIGN OVERVIEW



### M.TASK SOFTWARE REFERENCES

- ▶ M.TASK\_LICENCE\_100IO
- ▶ M.TASK\_LICENCE\_200IO
- ▶ M.TASK\_LICENCE\_400IO

- ▶ M.TASK\_LICENCE\_600IO
- ▶ M.TASK\_LICENCE\_800IO
- ▶ M.TASK\_LICENCE\_1000IO
- ▶ M.TASK\_LICENCE\_1500IO

- ▶ M.TASK\_LICENCE\_2000IO
- ▶ M.TASK\_LICENCE\_2500IO
- ▶ M.TASK\_LICENCE\_4000IO



Tel. + 33 (0)2 98 52 16 44 - Fax : + 33 (0)2 98 64 74 05 - [marinelec@marinelec.com](mailto:marinelec@marinelec.com) - [www.marinelec.com](http://www.marinelec.com)

sail safely

